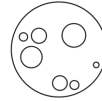




These **ARE** sources of light



NOT sources of light



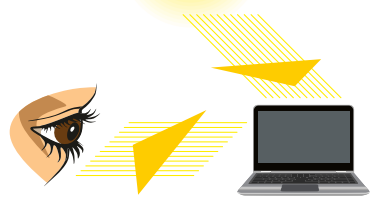
The Moon and shiny tin foil



To see we **must have light.**

light **reflects** off an object

enters our eyes



no light = **no sight**

object can't be seen without light



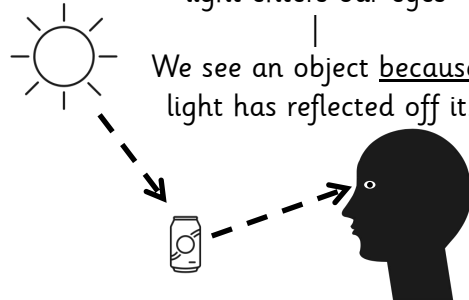
darkness is the absence of light

Light

light **reflects** off a surface

light enters our eyes

We see an object because light has reflected off it.



Light does NOT come from our eyes.

We use arrows to show the direction light travels from the source. - - - - ->



NEVER look directly at the sun or at bright light sources such as torches.

damage your eyes

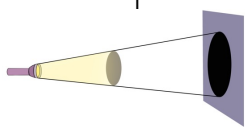


You can **protect** your eyes



shadows form

opaque object blocks the light



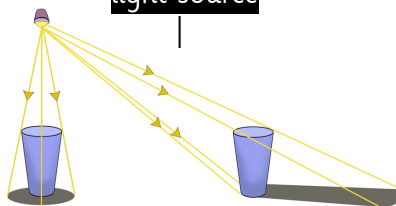
opaque objects let NO light through and cast shadows

translucent - lets some light through

transparent - lets all light through

shadows change length

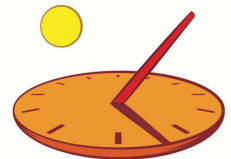
depending on the position of the **light source**



source directly **above** = short shadow

source **further away** = longer shadow

shadows change length as the Earth rotates



sun dials cast shadows

tell the time during the day